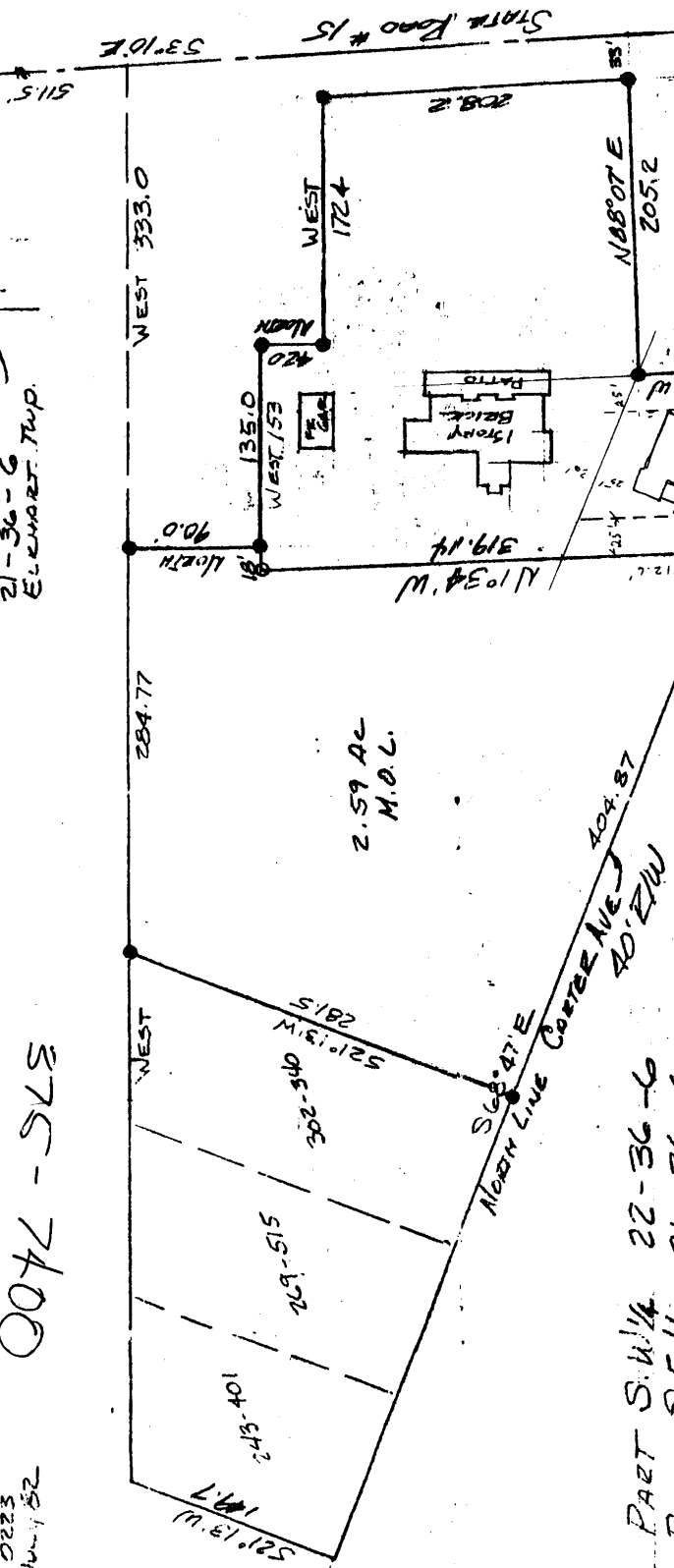


SCALE: 1"=100'
 JOE H. & S. 82-0223
 DATED 15 JUN 1982

007L-SLS
 275-740

N.E. COR. S.E. 1/4
 21-36-6
 ELKHART TWP.

EAST
 78.8



PART S.W. 1/4 22-36-6
 PART S.E. 1/4 21-36-6
 CITY OF GOSHEN, IN

I, Ronald A. Weaver, a Registered Surveyor, hereby certify that I have the parcels of land delineated hereon shown as encroachments other than shown.

Iron stakes are located at all places thus 0
 monuments are located at all places thus 0

ASURCO INC.
 LAND SURVEYING
 PLANNING
 SUBDIVISION DEVELOPMENT
 ROUTE 1 • BOX 364 • MIDDLEBURY, IN • 46150
 Phone 625-3586

Ronald A. Weaver
 REGISTERED SURVEYOR
 INDIANA REG. NO. 90

